

# panorama



Official Newsletter of Brighton Art Society Inc.

Issue  
367  
July

## FROM THE PRESIDENT

*Dear BAS members,*

In the last edition of Panorama, I mentioned the mid-year Online Exhibition: "Best of Bayside" which we are holding with the support of Bayside Council. You should recently have received an email flyer with all the necessary information, including the procedure for how to enter which is now open via the BAS website. Entries close on July 31st, so time is fast running out. We all need to swing into action and add our pictures, it's a good opportunity to share what we have been doing with others in the group. If you are having any difficulty, ring the BAS office, leave your name and contact number and someone will get back to help.

Good news we recently received, is that the Bayside Mayor, Alex Del Porto has agreed to act as our judge. The Council has always supported a "Best of Bayside" prize at the annual exhibition, so we will use the money this year for the Online Show. Prizes will be: \$200 for First; \$100 for Second and \$50 for Highly Commended.

**LYNTON DAEHLI**

[brightonartsociety.com.au](http://brightonartsociety.com.au)



**FOLOW US ON FACEBOOK : [facebook.com/brightonartsociety](https://facebook.com/brightonartsociety)**

# A DAY OUT IN BALLARAT

Victoria has a number of Regional Art Galleries. The quality of the permanent collections they hold varies, as does the size and range of their temporary exhibitions, but the Art Gallery of Ballarat remains one of my favourites amongst them. It has the status of being the first purpose built art gallery in regional Australia and still occupies the original building, first opened to the public in 1890. Of course, a number of extensions have been added over time and these have permitted a generous growth of the permanent collection and opportunities for rich temporary displays.

Interestingly, the initial grant of a substantial centrally located plot of land in gracious Lydiard St. along with funding for construction of the building and purchase of the first works for the collection, came from the State Government of Victoria. Perhaps the good “Burghers of Ballarat” had some influential connections in Spring Street. Enormous wealth was generated for the city of Ballarat from the mid C19th onward as a result of the Victorian gold rush, to which the splendour of its grand buildings and streetscapes attest. However, this source of wealth was declining by the time the art gallery was founded.

An interesting morsel of information I gleaned only on this most recent visit is that the gallery’s street facade was constructed with retail shops for independent businesses on either side of its main entry. I had always thought it had a very modest street presence in contrast to the grand central staircase which greets us on entry. This though, was a deliberate decision on the part of the planners and the rental income from these premises sustained the operation of the gallery for many years.

The prompt for my recent visit was a temporary exhibition entitled: **Light and Shade - Max Meldrum and his followers**. Max Meldrum was a prominent and sometimes controversial tonal-realist painter and teacher, active in the first half of the C20th. He was appointed President of the Victorian Artists Society in 1916, however, it was a short and turbulent association and he soon moved on to establish his own school. Familiar names in his circle are: AME Bale; Clarice Beckett; Percy Leason and Jock Frater, all of whom had successful careers and whose work is held in major public collections.

**Meldrum** had a sustained connection with the City of Ballarat and was commissioned in 1923 to paint this portrait of Alfred Mica Smith, on his retirement as Professor in Chemistry and Metallurgy at the Ballarat School of Mines. It was apparently rejected by the School as “too modern” and was subsequently acquired by the Gallery. Although by contemporary standards it may be considered stayed, it is a good example of Meldrum’s approach which insists on defining the subject by the laying down of relative areas of lighter and darker tones without dependence on line for definition.

Although I have my reservations about the sometimes turgid and brown-heavy quality of certain paintings within this tradition, an advantage of a larger exhibition such as this, is that there are always unexpected gems to be discovered. Several of the painters included, I had not previously encountered and even amongst those with recognisable names, charming and unexpected examples of their work were included.

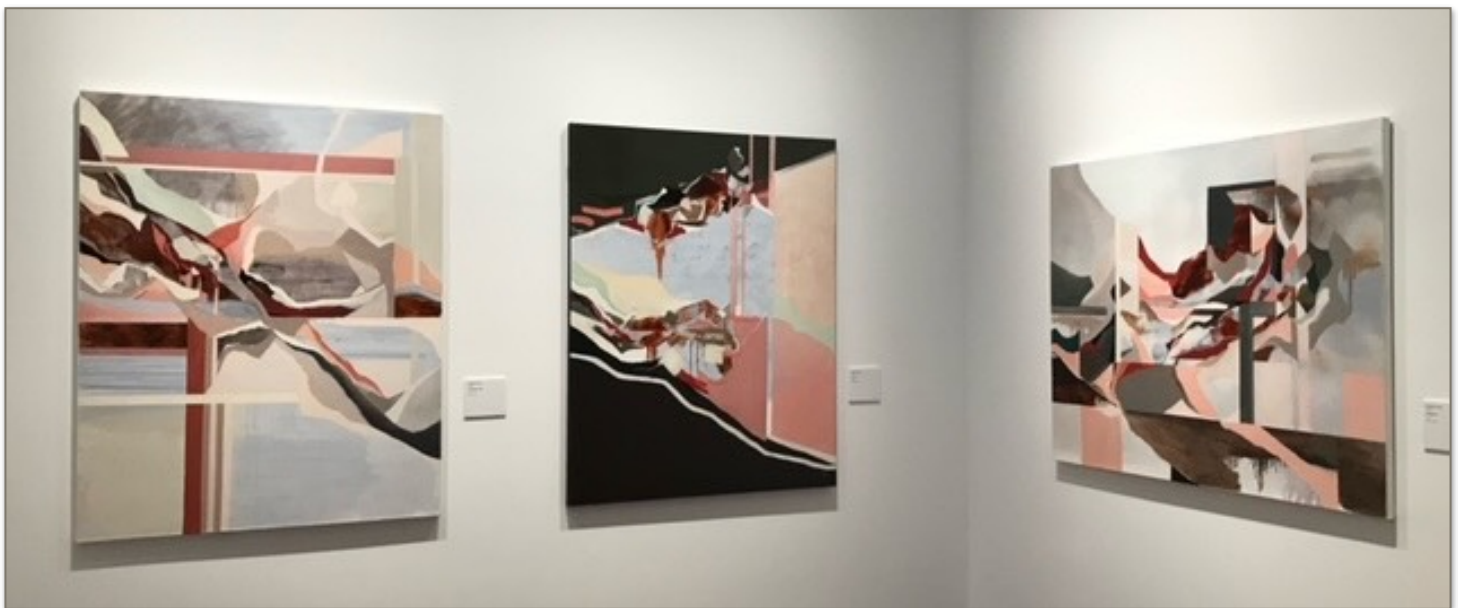


**T**his small painting by Percy Leason is titled: Statue in a Garden Pond - Eltham. Leason lived in this area on the fringes of Melbourne for a number of years prior to migrating to America in 1939 and apparently had much affection for the garden he had established there. The composition has a simplicity, with its firm cream-coloured curving horizontal pond edge splitting the format. This is intersected with the similarly creamy statue which crosses it perpendicularly. The remainder of the painting comprises a tonal play of greens, both in the water with its floating lilies and the shrubs and grass of the picture's upper half. Again we can see the definition being achieved by changing blocks of tone, where edge is the result only of contrasting tones pushing up against each other, rather than any use of line or drawn contour.



PERCY LEASON - Statue in Garden Pond - 1930

As I mentioned earlier, the Ballarat Gallery has had its floor space expanded over time to a point where there is now very generous display capacity. At present, there are four separate temporary exhibitions on offer, in addition to a substantial and impressive permanent collection.



RACHEL KING from Terrain Series 2021

**Rachel King** is a young Ballarat based artist, whose work is presently on display in one of the temporary exhibition spaces, under the title: TERRAIN. I've not encountered her work before, but found it engaging. She begins with observation of the landscape around her, but progresses toward abstraction, whilst maintaining the evocation of space and clear landscape elements.

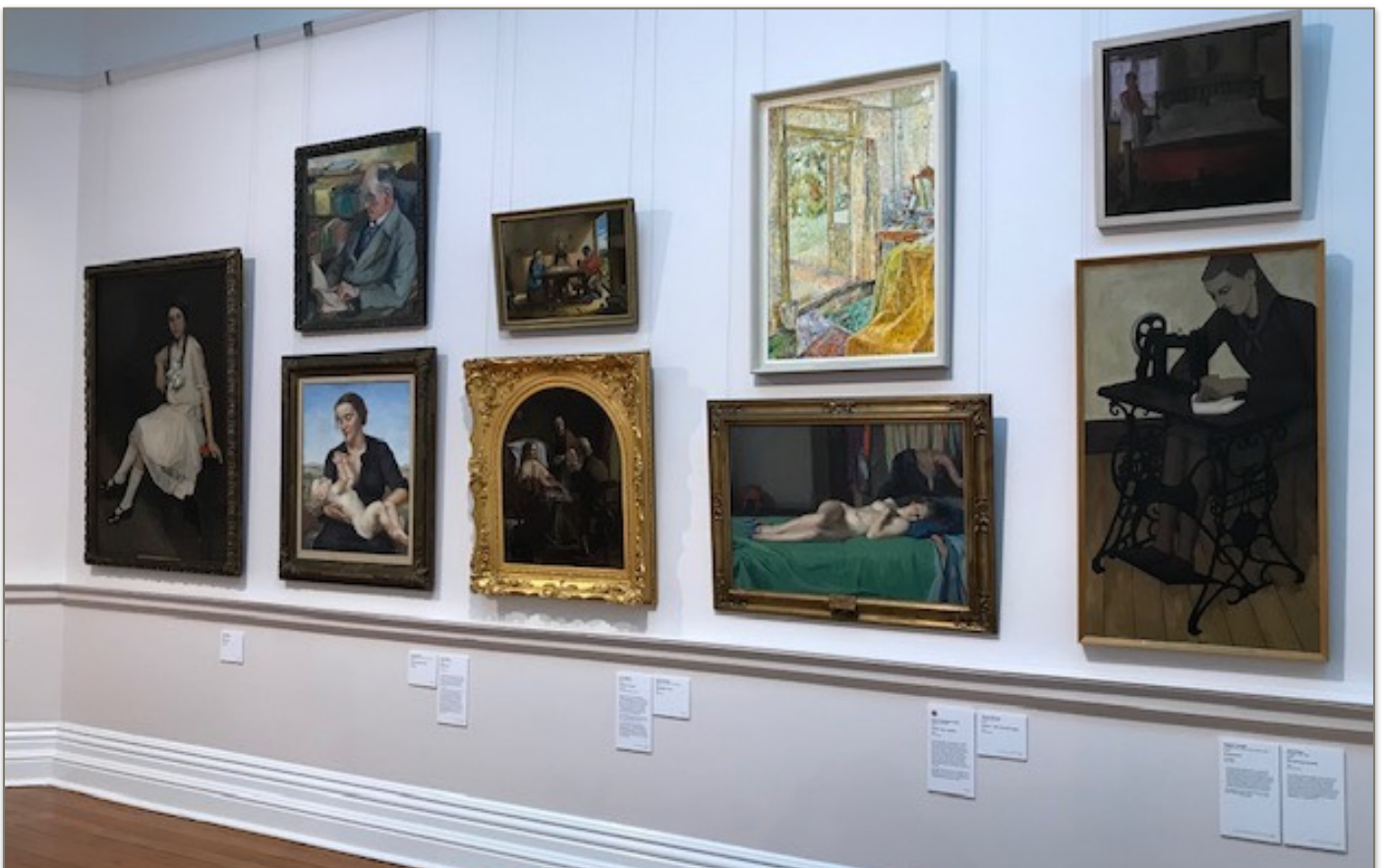
The permanent collection is arranged under thematic headings, rather than chronological or style based categories. At first I was unsure about this, but came to enjoy what was a times an unexpected bringing together of the individual pieces. Some of the important thematic headings are: ORIGINS, which includes many of the gallery's early acquisitions; PLACE, which features works relating to Ballarat from colonial to contemporary times; COUNTRY, which brings together a diverse collection of landscape painting and HOME, which gives attention to pictures with a domestic theme.



EUGENE VON GUERARD - Old Ballarat, in summer 1853-1854

This picture by **Eugene von Guerard**, is included under the grouping of PLACE and captures in detail, a vista of the tent city Ballarat may have been at the beginning of the gold rush in the 1850s. Although it was painted later in the C19th as the result of a commission by the Gallery, the artist developed it from detailed sketches made at the time it depicts.

Von Guerard was born in Austria in 1811 and initially came to Australia in 1853 to try his luck on the gold fields. Although he had little success at this, he remained here for thirty years and became one of the most respected and successful painters of the colonial era. His finely detailed and topographically accurate pictures, resulted in him obtaining many commissions, for which he travelled widely in south-eastern Australia to document the grand pastoral properties and distinctive landscapes he encountered.



This wall in the space entitled: HOME, illustrates the curatorial approach of bringing together works from different periods and artists under a theme to create a satisfying display. Paintings by Grace Cossington-Smith, Nora Heysen and John Brack are included here amongst others.

The city of Ballarat is worth a visit in itself. It boasts many beautiful historic buildings and a stroll around to enjoy these is rewarding. It's a manageable day trip from Melbourne, with a regular and efficient train service for those who don't want to take on the drive.

## LYNTON DAEHLI

# 'Best of Bayside' 2022 Mid-Year Online BAS Exhibition



**The BAS Committee** invites all current members to submit up to two entries in our mid-year online exhibition. Securing venues for physical shows remains an ongoing challenge, so online alternatives mean we can more frequently participate in sharing our own artwork within Brighton Art Society and the broader art community, whilst encouraging and acknowledging everyone in their creative pursuits.

### Theme

'Best of Bayside' which could be interpreted very widely to include everything from figurative, landscape, seascape to abstract and any medium or size.

### Dates

Uploading can commence Monday 26 June and will close midnight on Sunday 31 July, to be judged the week following by an independent Bayside City Council appointee.

No entry fees payable – must be a paid-up BAS member to be eligible for a prize.

### How To Enter?

- 1) Log into the BAS website <https://www.brightonartsociety.com.au>
- 2) Under 'Events' tab select **2022 online exhibition**
- 3) Click on '**Media**' and upload your image from your computer or device – two entries allowed per member
- 4) Once uploaded, double click on your image to complete the '**description**' details box – title, size and medium of your submission and if for sale/not for sale

No fees are payable – must be a paid-up 2022 BAS member to be eligible for a prize

**SHOW ENTRIES CLOSE:** Sunday 31 July at 5pm

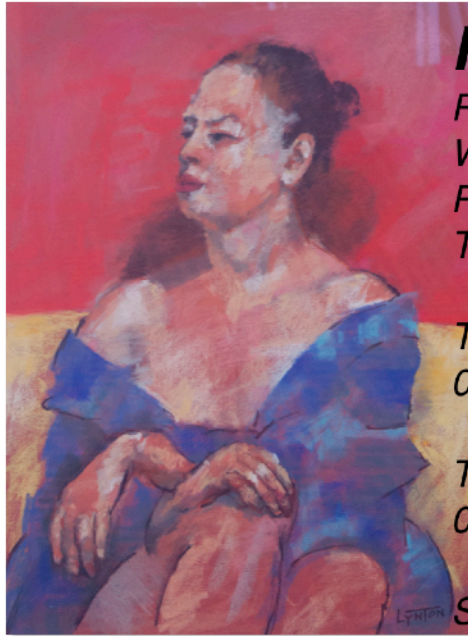
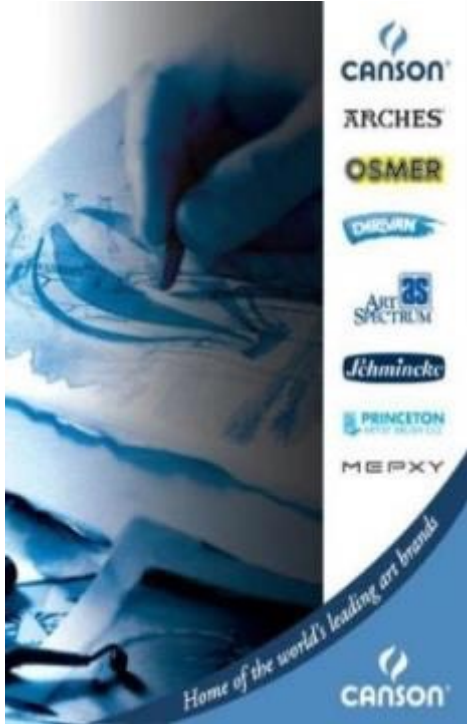
**PRIZES:** \$200 First \$100 Second \$50 Highly Commended

BAS Committee will advise winners in first week of August

Don't forget that we have an active BAS Facebook page, so we encourage you to also upload your artwork there with title, medium, size and other details. Feel free to use our Facebook forum to show other members what you have entered - don't be shy. You may even attract a buyer! BAS will also share some of the exhibition images periodically as posts on our Facebook page.

*Happy painting – have fun everyone!*

**BAS Committee**



**P**lease join us for an *Untutored Portrait or Figure session*  
*Warm and friendly environment.*  
*Professional models*  
*Three week poses.*

*Tuesday 3:30 - 6:30 (Contact **Roz:**  
 0413 918 486)*

*Thursday 4:00 - 7:00 (Contact **Rod:**  
 0488 344 889)*

*Saturday 2:00 - 4:00 (Contact **Ann:**  
 9598 7626)*



**Simone supports The Brighton Art Society**

I would love to hear from anyone who has questions about preparing to sell, or who simply would be interested in a discreet chat about how this current market has affected their property value.

**Call me on 0403 857 266** to book a confidential, no-obligation chat.



E: [simone@atriarealestate.com.au](mailto:simone@atriarealestate.com.au) P: 0403 857 266 A: 407 Bay St, Brighton 3186



**Framing in Brighton Since 1978**

**Contact Gary or Denise**

**301 Bay Street**

**Brighton 3186**

**Phone 03 9596 3311**

You can share with other members, send us your snaps, thoughts by email today:

[brightonartsociety@icloud.com](mailto:brightonartsociety@icloud.com)



Stocking all the major brands such as

Arches	Mabef
Art Spectrum	Matisse
Atelier	Masters Choice
Canson	Mi Tients
Charvin	Michael Harding
Colourfix	NEEF
Da Vinci	Old Holland
Daniel Smith	Prismacolour
Derwent	Rembrandt
Escoda	Saunders
Faber Castell	Schmincke
Golden	Williamsburg
Holbein	Winsor & Newton
Lefranc	& Lots more

**Visit us  
at**

**Frankston**  
72 Dandenong Rd West  
Ph 9783-6044

**Malvern**  
1310 Malvern Rd  
Ph 9804-3404

**Melbourne**  
21 Degraes St  
Ph 9639-6662

**Bulleen**  
217 Bulleen Road  
Ph 9191-7862

having trouble getting in

Try online at

**WWW.SENIORART.COM.AU**



454 Glenhuntly Rd Elsternwick VIC 3185

T: 9528 3376

E: [fourcorners@melb.biz](mailto:fourcorners@melb.biz)

## JENNY'S ORIGINAL BOARDS

ABN: 67 338 542 407  
Business No.: B1736223U

### *Artist Supplies*

*Professional Canvas Board*

*Winsor & Newton Paints*

*Arches & Saunders Watercolour Paper*

*Brushes*

*Pastel & Mi-Teintes Pastel Paper*

*Frederix Products*

*Proprietor: Jenny Laurent  
with Guidance from Gwen Newbegin*

*32 View Road. Vermont 3133*

*Phone/Fax: (03) 9873 1147*

*Email: [jenny.laurent1@bigpond.com](mailto:jenny.laurent1@bigpond.com)*

*Mail orders a specialty*

# Melbourne Artists' Supplies

Proud sponsors of the Brighton Art Society

Stocking Melbourne's finest  
selection of quality art materials

Hampton East  
916 Nepean Highway  
9553 3663

**Tony Benedict**  
Director

**BENFORD**  
CUSTOM FRAMING

03 9555 2927  
239 East Boundary Rd  
Bentleigh East. 3165

Bentleigh East 3165  
239 East Boundary Rd

Brighton Art Society Inc.  
PO Box 2234, Brighton North, 3186  
PRINTPOST APPROVED 100001166

July 2022 EDITION

Postage  
Paid

## 2022 Committee

PRESIDENT	Lynton Daehli
VICE PRESIDENT & EXHIBITIONS	Sharon De Saily
TREASURER	Tom Rowston
SECRETARY	Rosemary Marsh
ENROLMENTS & WEBSITE	Charmaine Cachia
DEMONSTRATIONS	Rod Edelsten
STUDIO MANAGER	Frank Schaefer
PANORAMA	Vladimir Tsyskin
COMMITTEE	Charly Savory

BAS OFFICE 9553 8506

## Dates to remember:

### DATES TO REMEMBER:

**July 25 - September 23**  
BAS Term Three

**July 31**  
Closing dates for entries to  
Best of Bayside Online Show